



# HotPort™ 3500 Indoor Wireless Mesh Nodes



HotPort™ 3500 10 Mbps



HotPort™ 3500 25 Mbps



### HotPort™ 3500 Indoor Mesh Nodes

HotPort 3500 mesh nodes provide Ethernet connectivity at any indoor location over a high-performance, self-forming wireless mesh backbone. Each node has a UL2043 plenum-rated enclosure and a built-in 4-port 10/100 Mbps Ethernet switch for connecting standard network devices or other networks to the wireless mesh.

Depending on the model, HotPort 3500 nodes operate at either a 2.4 GHz for maximum range and penetration, or at 5 GHz to minimize interference from other wireless devices. These nodes are available in 10 Mbps throughput, delivering a cost effective solution for Wi-Fi HotZones, or 25 Mbps throughput plus traffic prioritization for high-performance video, voice, and data. Equipped with high-power, 400 mW radios, HotPort 3500 nodes provide long reach and reliable connectivity.

### HotPort High Performance Mesh Network

FireTide HotPort mesh nodes automatically connect to each other to create a HotPort high performance wireless mesh network. Designed for maximum performance, scalability and ease of use, the HotPort mesh network operates seamlessly indoors

and outdoors, making it ideal for campus and metropolitan area networks. FireTide's AutoMesh™ protocol provides highly efficient communication among nodes and the network's self-forming and self-healing properties enable rapid deployment and dependable operation. Additional features include support for Virtual LANs, class of service traffic prioritization (25 Mbps models only), strong encryption and access control for robust security, Dynamic Frequency Selection (DFS) to minimize radio/radar interference, and more.

### Automatic Node Deployment

Upon power up, the AutoMesh protocol automatically discovers and incorporates the node into the mesh network. Multiple, redundant paths add resiliency and allow the mesh to work around disabled links or line-of-sight obstructions.

### Connecting Network Devices

The four-port Ethernet switch can be used to connect access points, video surveillance cameras, or other devices equipped with an Ethernet interface. Network devices require no reconfiguration or special software to operate over a HotPort wireless mesh.

### Connecting Other Networks

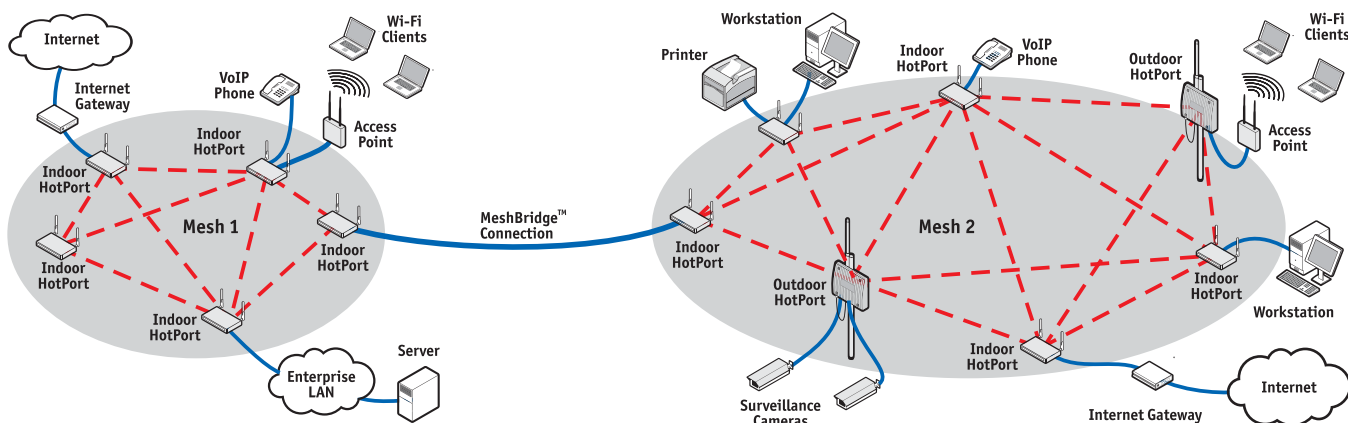
Any HotPort node can also be used for internetworking. Operating as a Network Gateway Interconnect (NGI), a node can connect directly to another network, such as an enterprise LAN/WAN or the Internet. The MeshBridge™ feature, included with the optional HotView Pro™ software, enables internetworking among multiple HotPort mesh networks to form a single LAN or WAN environment with up to 1,000 mesh nodes.

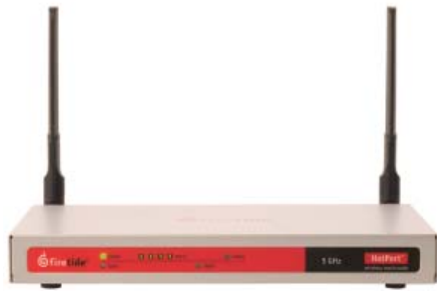
### Mounting and Antenna Options

An optional mounting kit is available for securing the unit to a wall or ceiling. The detachable omni-directional antennas can be replaced with other antennas if directional control is needed for longer range or to minimize wireless interference.

### HotView™ Mesh Management Software

Each HotPort mesh node includes FireTide's HotView management software for basic mesh configuration, monitoring and management. The optional HotView Pro mesh management software provides additional control for multiple mesh networks and larger mesh environments such as enterprise, metropolitan, and campus networks.





## HotPort™ 3500 Indoor Wireless Mesh Nodes



## Specifications

### Models

- HotPort 3500-2401  
Indoor, 400 mW, 2.4 GHz, 10 Mbps
- HotPort 3500-5001  
Indoor, 400 mW, 5 GHz, 10 Mbps
- HotPort 3500-2403  
Indoor, 400 mW, 2.4 GHz, 25 Mbps
- HotPort 3500-5003  
Indoor, 400 mW, 5 GHz, 25 Mbps

### Mesh protocol

- Firetide AutoMesh™ protocol

### Traffic prioritization

- Class of Service (HotPort 3500-2403 and HotPort 3500-5003 only)

### Encryption

- 40 bit, 104 bit WEP keys
- 128 bit, 256 bit AES keys

### Radio

- Frequency ranges and transmit power
  - 2.400—2.484 GHz, up to 400 mW
  - 5.150—5.250 GHz, up to 100 mW
  - 5.250—5.350 GHz, up to 100 mW
  - 5.725—5.850 GHz, up to 400 mW
- Receive sensitivity
  - 2.4 GHz, DSSS
    - 1 Mbps: -96 dBm
    - 11 Mbps: -90 dBm
  - 2.4 GHz, OFDM
    - 6 Mbps: -93 dBm
    - 54 Mbps: -74 dBm
  - 5 GHz, OFDM
    - 6 Mbps: -92 dBm
    - 54 Mbps: -72 dBm
- Dynamic Frequency Selection (DFS)

### Antennas

- Two antennas provided with each unit
- Pattern: Omni directional, vertical polarization
- Connectors: SMA, reverse polarity
- Length: 6.25 in. (15.5 cm)
- Range: Approx. 2,000 feet (600 meters) open environment
- Gain: up to 5 dBi

### Network ports

- Four 10/100 Base-T (RJ-45) ports  
IEEE 802.3, 802.3u compliant
- CSMA/CD 10/100 autosense

### Enclosure

- System indicator LEDs (power, status, mesh, fault)
- Ethernet indicator LEDs (link status, activity)
- Two antenna connectors: SMA, reverse polarity
- Power connector
- Four Ethernet data connectors (RJ-45)
- Reset button (recessed)
- Security slot for physical locking device
- Weight: 2.1 lbs (.95 Kg) without external transformer
- Dimensions: 9.00 in x 5.84 in x 1.07 in (22.85 cm x 14.83 cm x 2.71 cm)

### Power

- Input voltage: 5 VDC @ 2.0 A
- External power supply: 100-240 VAC, 50/60 Hz
- Power consumption: 8-10 W, depending upon configuration

### Regulatory agency certifications

- Plenum rated UL2043
- FCC Part 15

### Environmental specifications

- Operating temperature: 0° C to +50° C
- Storage temperature: -20° C to +70° C
- Humidity (non-condensing): 10% to 90%
- Storage humidity (non-condensing): 10% to 90%

### Accessories

- Mounting kit for secure wall, ceiling, table-top, or cubicle installation (not included)

### Mesh management software

- HotView™ mesh management software (bundled)
- HotView Pro™ mesh management software (optional)

### Warranty

- One year limited warranty (see warranty card for details)

## Other Firetide Mesh Products



HotPort Outdoor Mesh Nodes



HotView™ and HotView Pro™ Mesh Management Software



HotPort 4.9 GHz Public Safety Mesh Network



Antennas and Accessories

[www.firetide.com](http://www.firetide.com)



16795 Lark Avenue, Suite 200  
Los Gatos, CA 95032  
Phone: +1 408-399-7771  
Fax: +1 408-399-7756  
Email: [info@firetide.com](mailto:info@firetide.com)